

APPLICATION NOTE

# Testing RCDs with the Fluke 1660 Series

Residual Current Operated Devices (RCDs) are often fitted in electrical installations to provide additional protection against fire and electrical shocks. Verifying the correct and safe operation of RCDs involves a number of dedicated tests, all of which can be carried out using the Fluke 1660 Series Multifunction Installation Testers.

## Why use RCDs?

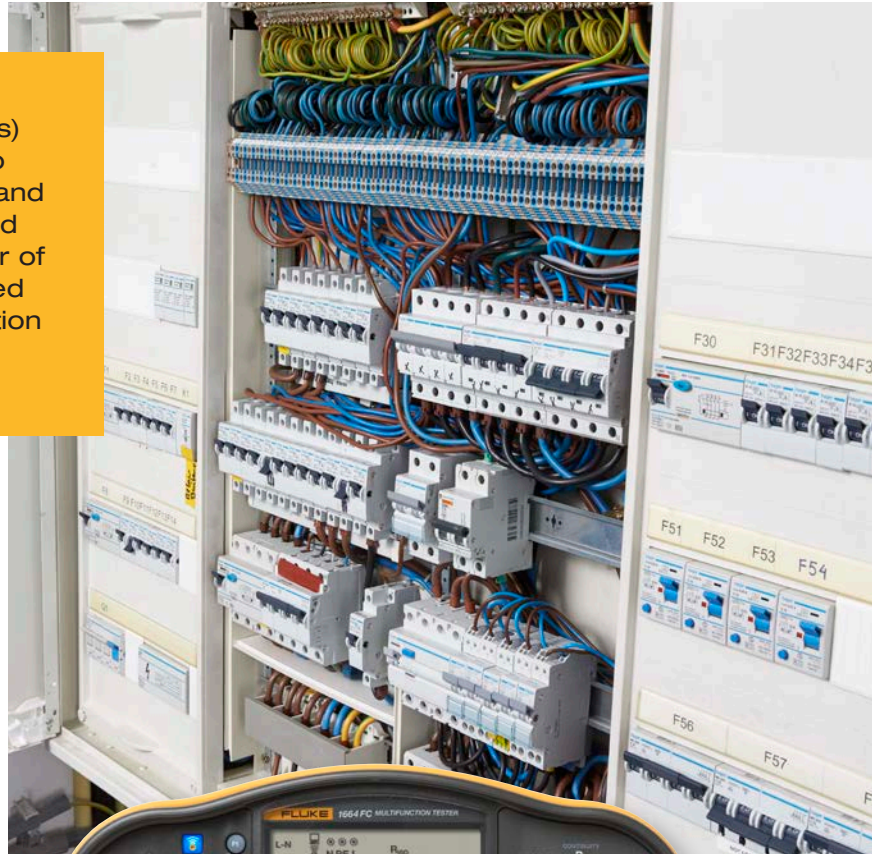
An RCD detects fault currents flowing to earth that are too small to trip over-current protection devices (such as fuses), but are still sufficient to cause a dangerous electric shock (see also figure 1 and 2) or an electrical fire. Verifying their operation is critical for safety, and is covered in IEC 60364 (and its various national equivalent standards). This standard specifies the requirements for fixed electrical installations in buildings.

## Why do we test RCDs?

Most RCDs have an integral test button, but even a successfully completed test using this facility does not necessarily confirm that the RCD is working correctly. Additional tests to measure tripping time are necessary to verify that the RCD will perform correctly under fault conditions, while extra tests may also be carried out to determine the actual tripping current. In standard regulations, testing RCDs fall under 'Verifying protection by automatic supply disconnection'. Depending on the type of system, that is TN, TT or IT, various test procedures are used. These include measurement of the fault loop impedance, measurement of the earth-electrode resistance for exposed-conductive-parts of the installation, and measurement or calculation of the first fault current. In all these procedures, verifying the characteristics and operation of protective devices such as circuit breakers, fuses and RCDs is critical.

## Different tests the Fluke meter performs

1660 Series can perform basic testing of RCDs, determining the tripping time (in milliseconds) by inducing a fault current in the circuit. In this test using a Fluke 1660 Series Multifunction Installation Tester, a calibrated fault current is



induced in the circuit, causing the RCD to trip. The instrument measures and displays the time taken for the RCD to trip. This test can be performed at distribution panels with test leads or at socket outlets using the mains cord supplied with the instrument. When connecting at distribution boards, connections are made to the line, neutral and earth conductors at convenient points on the load side of the RCD. Note that the test is performed with a live circuit with the load disconnected. The 1660 Series testers also perform a pre-test to determine if the actual test will cause a fault voltage exceeding the 50 V or 25 V limit. For S type (time delay) RCDs, set the 1660 unit to S-type mode. This incorporates a 30 second delay, activated between the pre-test and the actual test in order to avoid having an inaccurate trip time.

## Effect of currents through human bodies

Figure 1. Effects of DC current

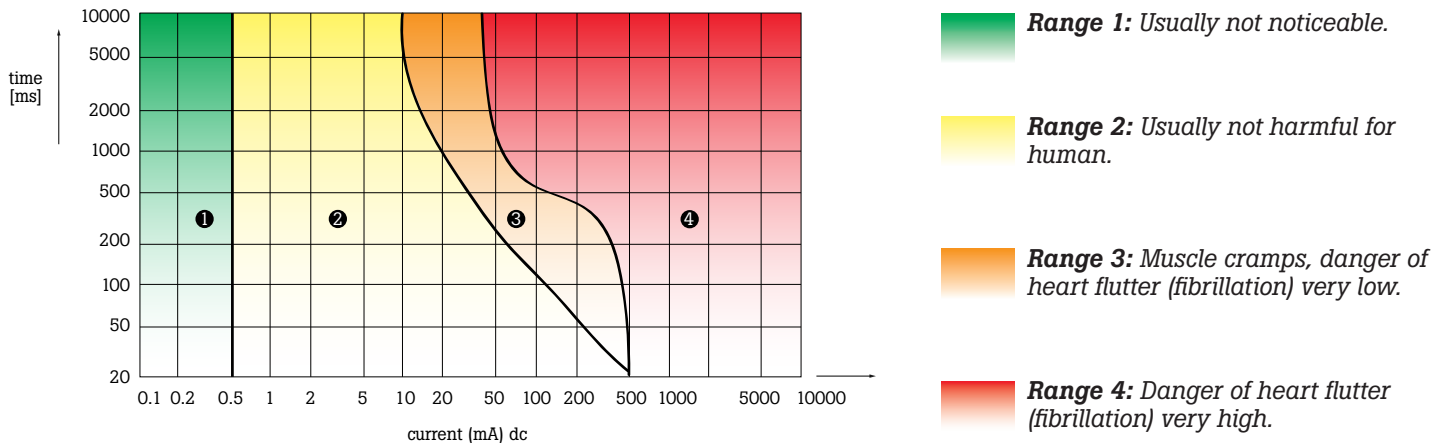
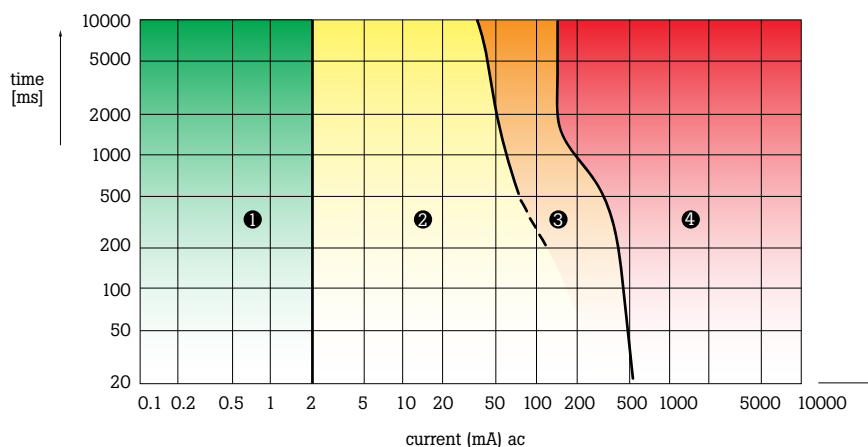


Figure 2. Effects of AC current (for RMS values from 50 Hz to 60 Hz)



## Manual measurement of RCD tripping time

To manually measure the tripping time, a number of parameters must be entered in the installation tester using the function soft keys. The following need to be set:

- RCD trip-current rating typically 10, 30, 100, 300, 500, 1000 mA or Var (variable test current setting)
- Test current multiplier x1/2, x1, x5 or auto
- RCD test-current waveform:
  - AC current to test Type AC (Standard AC RCD) and Type A (pulse sensitive RCD) - Pulse current to test Type A (pulse sensitive RCD)
  - Smooth-DC current to test type B RCD (Smooth-DC on 1664 FC only)
  - Delayed response to S-type B (time delayed smooth-DC current RCD; Smooth-DC on 1664 FC only)

- Delayed response to test S-Type AC (time delayed AC RCD) or S-Type A (time delayed pulse-sensitive RCD)

- Test-current phase setting 0° or 180°

### Note:

The European standard IEC 61008-1 describes the properties for RCDs. Trip current limits for RCD type A, dc pulse is allowed between 35 % and 140 % (even 200 % for 10mA RCD type) of the nominal trip current e.g. for a 30 mA RCD the trip current can be between 10.5 mA and 42 mA.

Note that because some RCDs are more sensitive in one half cycle of the mains supply waveform than the other, the test must be carried out for both zero and 180 degree phase settings, and the longest time should be recorded. The default setting for the test current multiplier is 'x1,' and this tests RCDs at their rated trip current. The measured tripping time can be compared with the maximum time permitted by local regulations or standards for that type of device.



the instrument reverses phase and repeats the x1 test. The sequence is repeated with x5 the RCD's current rating to complete the auto test cycle. The instrument 'senses' when the RCD has been manually reset and initiates the next test in the sequence. Results are held in temporary memory, and viewed by stepping through with the arrow buttons. The 1663 & 1664 FC also have an internal memory for storing results for later recall or importing into a report made using DMS Software.

### Ramp RCD testing

In addition to measuring trip time, the 1660 models can also measure RCD tripping current by gradually increasing an applied current until the RCD trips. This is commonly referred to as a ramp RCD test. Once again, the RCD trip current rating, RCD type, and test current phase must be selected using soft-keys before commencing the test.

### Variable RCD trip-current setting

The new 1660 series covers an additional feature for RCD testing. To measure RCD tripping current for a custom RCD setting the VAR mode is available. With the arrow keys a user defined current can be selected between 10...1000 mA (AC test current) and 10...700 mA to adjust the value.

### Auto testing

To simplify and speed up testing, the 1660 models have an auto mode for measuring RCD tripping time in which six tests (x1/2, x1 and x5 at 0° and 180°) are automatically carried out in sequence. This eliminates the need for the test engineer or his assistant to keep returning to the installation tester after resetting a tripped RCD. This feature saves a considerable amount of time on site. To measure RCD tripping time using Auto mode on the 1660 models, the RCD current rating is again entered with soft-keys and the Auto mode selected using the function soft-keys. After entering the RCD type and initiating the test, the sequence starts by applying x1/2 the RCD's current rating for a predetermined period (310, 510 or 2000 ms – depending on local regulations). If the RCD trips, the test is terminated. If not, the instrument automatically reverses the phase and repeats the test. Again, if the RCD trips, the test is terminated. If not, the instrument supplies x1 the RCD's current rating for 2000 ms. The RCD should now trip and the time is displayed and stored in memory. After the RCD has been reset,

### Fluke Connect®, ShareLive™ Calling and Fluke Cloud™ storage

Stay on the same page even when you and your team are in different places with ShareLive™ video call. Fluke Connect allows your 1664 FC Installation Tester to send test results to your smartphone so you can connect and collaborate with others. It's the fastest way to let your team see what you see, helping you get approvals without leaving the field.

Fluke Cloud™ storage lets you retrieve stored results whether you are in the office or in the field to make decisions in real time. You can import the data into Fluke DMS to process and generate certificates. Plus you get world-class data protection with Fluke Cloud™ storage. Safe. Secure. Fast. More accurate. All from the power of Fluke Connect.

**Fluke.** *Keeping your world up and running.®*

**Fluke Corporation**  
PO Box 9090, Everett, WA 98206 U.S.A.

**Fluke Europe B.V.**  
PO Box 1186, 5602 BD  
Eindhoven, The Netherlands

**For more information call:**  
In the U.S.A. (800) 443-5853 or  
Fax (425) 446-5116  
In Europe/M-East/Africa +31 (0) 40 2675 200 or  
Fax +31 (0) 40 2675 222  
In Canada (800)-36-FLUKE or  
Fax (905) 890-6866  
From other countries +1 (425) 446-5500 or  
Fax +1 (425) 446-5116  
Web access: <http://www.fluke.com>

©2016 Fluke Corporation.  
Specifications subject to change without notice.  
Printed in U.S.A. 4/2016 6004617a-en

**Modification of this document is not permitted without written permission from Fluke Corporation.**